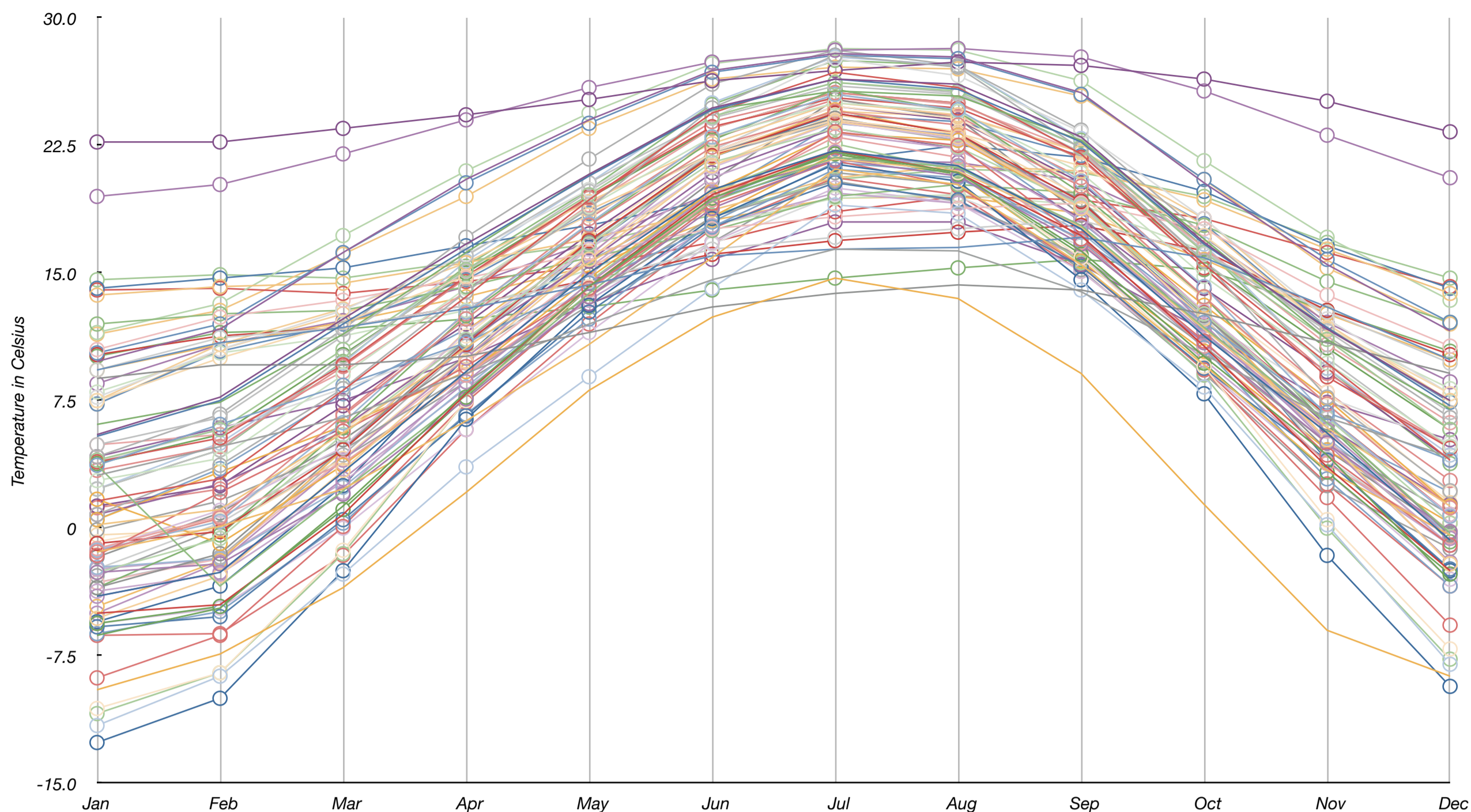
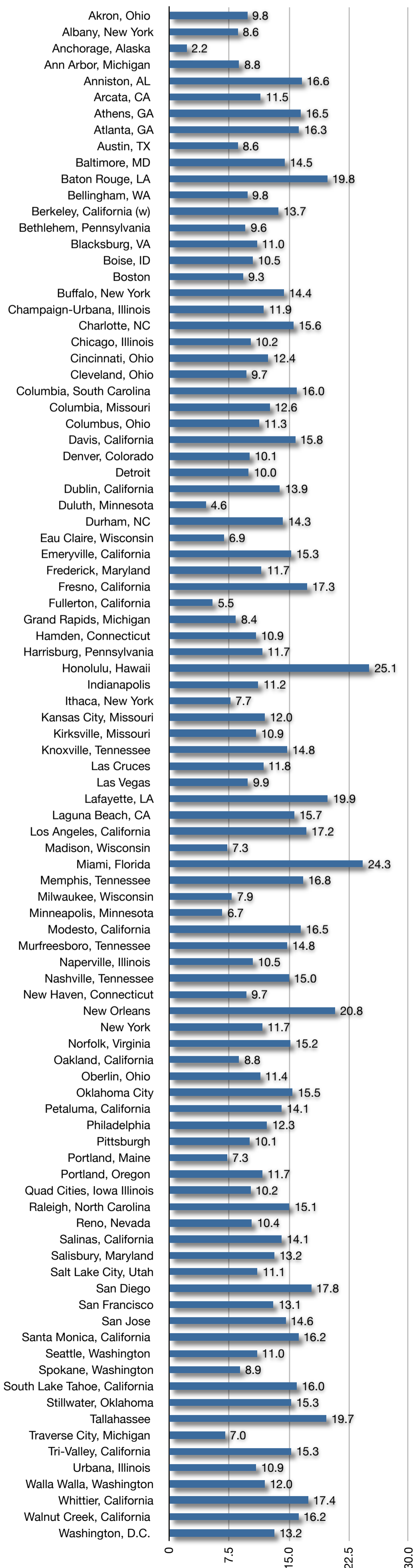


Name	Jan	Feb	Mar	Apr	May	Jun	Jul	Aug	Sep	Oct	Nov	Dec	Year	Latitude	Longitude
Akron, Ohio	-4.00	-2.60	3.30	9.20	15.00	19.90	22.20	21.30	17.60	11.30	5.60	-0.70	9.80	57.20 N	2.20 W
Albany, New York	-6.30	-4.70	1.30	8.00	14.20	19.40	22.10	20.90	16.30	10.10	4.30	-3.10	8.60	52.45°N	1.70°W
Anchorage, Alaska	-9.50	-7.40	-3.50	2.10	8.10	12.40	14.70	13.50	9.10	1.40	-6.00	-8.70	2.20	50.842941	-0.131312
Ann Arbor, Michigan	-5.00	-4.50	0.80	7.90	14.20	19.60	22.20	20.90	17.20	10.70	3.60	-2.50	8.80	51.4537	-2.5897
Anniston, AL	5.50	7.70	12.30	16.70	20.80	24.70	26.40	26.10	23.00	16.80	11.70	7.50	16.60		
Arcata, CA	8.80	9.60	9.60	10.10	11.50	13.00	13.80	14.30	14.00	12.60	10.90	9.10	11.50		
Athens, GA	5.40	7.50	12.00	16.40	20.70	24.60	26.40	25.80	22.70	16.70	11.80	7.20	16.50		
Atlanta, GA	6.10	7.40	11.40	16.20	20.80	24.60	25.70	25.40	22.80	17.00	11.10	7.00	16.30		
Austin, TX	-1.40	0.10	2.30	6.30	10.80	15.90	21.10	20.20	15.50	9.60	3.40	-0.40	8.60		
Baltimore, MD	1.60	2.90	8.10	13.60	19.30	24.40	26.80	25.90	22.00	15.50	9.70	4.00	14.50		
Baton Rouge, LA	9.80	11.70	16.20	20.50	24.00	26.90	27.90	27.70	25.60	20.30	15.50	11.60	19.80		
Bellingham, WA	3.10	4.80	6.50	9.10	12.00	14.60	16.40	16.30	13.90	10.20	6.50	4.20	9.80		
Berkeley, California (w)	9.30	10.90	11.80	12.90	14.30	16.00	16.40	16.50	17.10	15.90	13.00	9.90	13.70		
Bethlehem, Pennsylvania	3.70	-3.40	2.20	7.80	13.80	19.20	21.80	21.20	17.80	11.80	6.20	-0.30	9.60		
Blacksburg, VA	0.20	1.10	5.60	10.60	15.60	19.80	21.70	21.00	17.70	11.70	5.90	1.30	11.00		
Boise, ID	-1.60	2.10	5.70	9.50	14.10	19.10	23.30	22.50	17.00	11.00	4.30	-1.00	10.50		
Boston	-2.60	-2.10	2.00	7.60	13.60	18.80	21.70	20.70	16.70	10.90	5.00	-0.20	9.30		
Buffalo, New York	0.80	3.70	8.20	13.90	18.80	24.70	27.80	27.10	22.30	15.70	7.70	2.20	14.40	51.5406	0.7162
Champaign-Urbana, Illinois	3.70	6.10	8.40	10.90	14.40	17.70	21.10	20.60	17.00	12.10	6.80	4.00	11.90		
Charlotte, NC	4.00	5.80	10.50	15.20	19.60	24.20	26.20	25.70	22.40	16.20	11.10	5.80	15.60		
Chicago, Illinois	-5.3	-2.8	3.4	9.8	15.8	21.3	23.9	23	18.8	12.3	5.2	-2.1	10.2		
Cincinnati, Ohio	-1.4	0.6	6.6	12.3	17.8	22.4	24.5	23.7	20.1	13.6	7.3	1.2	12.4		
Cleveland, Ohio	-4	-2.6	2.9	8.6	14.4	19.7	22.1	21.3	17.7	11.5	5.8	-0.6	9.7		
Columbia, South Carolina	4.9	6.5	11.3	16	20.3	24.1	26	25.5	22.4	16.3	11.6	6.8	16		
Columbia, Missouri	-1.3	0.4	6.2	12.7	17.9	23	25.5	24.6	20.4	14.2	6.6	0.7	12.6		
Columbus, Ohio	-2.6	-0.6	5.5	11.1	16.7	21.5	23.5	22.4	19	12.6	6.5	0.3	11.3		
Davis, California	7.5	10	12.1	14.8	18.4	22	24	23.2	21.3	17.2	11.8	7.9	15.8		
Denver, Colorado	-1.2	0.7	3.8	9	14	19.3	23	21.8	16.8	10.7	3.8	-0.5	10.1		
Detroit	-3.7	-2.7	2.1	9	15.3	20.6	23.2	22.3	18.1	11.9	5.2	-1	10		
Dublin, California	9.3	11.2	11.8	13.1	14.5	16.4	17.1	17.6	18.1	16.1	12.7	9.7	13.9		
Duluth, Minnesota	-11.6	-8.7	-2.7	3.6	8.9	14.1	19	18.5	14	8.3	0.2	-8	4.6		
Durham, NC	2.8	4.1	9	14.1	18.9	23	25	24.5	20.9	14.8	9.7	4.8	14.3		
Eau Claire, Wisconsin	-10.6	-8.5	-1.3	7.5	14.2	19.5	22.2	20.9	15.9	9.5	0.5	-7.1	6.9		
Emeryville, California	10.5	12.4	13.4	14.7	16.2	17.6	18.3	18.8	19.1	17.6	13.7	10.7	15.3		
Frederick, Maryland	-1.3	1.05	4.75	11.55	16.4	21.2	23.85	22.9	18.9	12.75	6.45	0.8	11.65		
Fresno, California	7.7	10.5	12.8	16.1	19.9	24.1	27.6	26.6	23.3	18.2	12.3	7.9	17.3		
Fullerton, California	-12.6	-10	-2.5	6.4	13.1	18.2	21.4	20.4	14.6	7.9	-1.6	-9.3	5.5		
Grand Rapids, Michigan	-5.6	-4.6	1.1	7.7	14.1	19.4	22	20.8	16.1	9.7	3.3	-2.7	8.4		
Hamden, Connecticut	1.7	-0.9	3.7	9	14.7	19.8	23.2	22.8	18.8	13.1	7.6	1.3	10.9		
Harrisburg, Pennsylvania	-0.9	-0.2	4.6	10.8	16.9	21.9	24.4	23.2	19.2	12.7	6.6	0.8	11.7		
Honolulu, Hawaii	22.7	22.7	23.5	24.3	25.2	26.3	26.9	27.4	27.2	26.4	25.1	23.3	25.1		
Indianapolis	-3.5	-1.5	4.7	11	16.8	22	24.1	22.9	19.3	12.5	6.2	-0.4	11.2		
Ithaca, New York	-5.8	-5.2	0.5	6.6	12.7	17.7	20.3	19.3	15.4	9.4	4	-2.4	7.7		
Kansas City, Missouri	-3.5	-0.4	5.9	12.5	17.8	22.8	25.8	24.5	19.7	13.6	6.1	-0.8	12		
Kirksville, Missouri	-4.6	-1.9	4.6	11.6	16.9	21.8	24.6	23.1	18.8	12.7	5.2	-2.1	10.9		
Knoxville, Tennessee	3.9	5.3	9.6	14.8	19.5	23.6	25.3	24.7	21.8	15.3	8.9	4.7	14.8		
Las Cruces	0.8	2.6	5.9	11	15.7	20.9	23.5	22.3	18.2	12.7	6	1.4	11.8		
Las Vegas	-0.1	1.6	4.6	9	13.6	18.3	20.4	19.2	16	10.7	5	0.8	9.9		
Lafayette, LA	10.3	12	16.2	20.3	23.8	26.8	27.8	27.6	25.5	20.5	15.8	12.1	19.9		
Laguna Beach, CA	12	12.6	12.8	14.2	15.9	17.5	19.5	20.2	19.7	17.8	14.5	12.1	15.7		
Los Angeles, California	13.7	14.2	14.4	15.6	17	18.7	20.6	21.3	21	19.3	16.4	13.8	17.2		
Madison, Wisconsin	-8.8	-6.3	0.1	7.4	13.6	19	21.6	20.1	15.4	9.3	1.8	-5.7	7.3		
Miami, Florida	19.5	20.2	22	24	25.9	27.4	28.1	28.2	27.7	25.7	23.1	20.6	24.3		
Memphis, Tennessee	4.2	6.7	11.7	17.1	21.7	26.1	28.1	27.2	23.4	17.2	11.3	6.5	16.8		
Milwaukee, Wisconsin	-6.2	-4.9	0.3	6.7	12.3	18	21.5	20.9	16.9	10.6	2.9	-3.4	7.9		
Minneapolis, Minnesota	-10.9	-8.5	-1.5	7.5	14.5	19.8	22.6	21	15.6	9	0	-7.7	6.7		
Modesto, California	7.5	10.8	12.9	15.6	19.2	22.6	25	24.3	22.1	17.8	11.7	7.5	16.5		
Murfreesboro, Tennessee	3.4	4.8	9.5	14.7	19.4	23.9	25.6	25	21.7	15.3	9.1	4.8	14.8		
Naperville, Illinois	-5	-2	4	10	16	22	24	23	19	12	5	-2	10.5		
Nashville, Tennessee	2.3	4.6	10.1	15.1	19.8	24.2	26.2	25.6	22.1	15.7	10	4.7	15		
New Haven, Connecticut	-2.3	-1.8	2.4	8.3	14.1	19.3	22.1	21.2	17.4	11.4	5.3	-0.4	9.7		
New Orleans	11.5	13.2	17.2	21	24.4	27.3	28.2	28.1	26.3	21.6	17.1	13.4	20.8		
New York	-0.4	-0.1	4.1	10.1	16.1	21.3	24.3	23.3	19.5	13.5	7.3	1.5	11.7		
Norfolk, Virginia	4.9	5.5	9.2	13.9	19	23.5	25.6	24.9	22.1	16.5	10.8	6.2	15.2		
Oakland, California	-2.4	-1.8	2.7	8.2	13.4	17.8	19.7	19.1	15.9	9.9	3.9	-1	8.8		
Oberlin, Ohio	-2.4	0.3	4.6	10.9	16.4	22.2	25.5	24.5	19.3	12.4	4.1	-1	11.4		
Oklahoma City	2.3	5	9.7	15.7	20.3	25	27.7	27.2	22.9	16.7	9.4	4.3	15.5		
Petaluma, California	8	10.3	11.3	12.8	15.2	17.8	19.4	19.6	19	16.3	11.7	8.2	14.1		
Philadelphia	-0.8	0.5	5.7	11.3	17.1	22.1	24.8	24.1	20.1	13.5	8	2.1	12.3		
Pittsburgh	-3.2	-1.8	4.1	9.7	15.2	19.9	22.2	21.3	17.7	11.3	5.7	-0.2	10.1		
Portland, Maine	-5.6	-4.7	0	5.8	11.5	16.8	20	19.1	15.1	9.4	3.3	-3	7.3		
Portland, Oregon	3.9	5.8	8.2	10.8	13.9	16.7	19.6	19.5	16.6	12.3	7.7	5	11.7		
Quad Cities, Iowa Illinois	-5.5	-3.4	2.5	10.1	16.5	21.8	24.4	23.2	18.8	12.4	4	-2.5	10.2		
Raleigh, North Carolina	3.8	5.5	10.2	15	19.4	23.5	25.6	25	21.7	15.6	10.6	5.8	15.1		
Reno, Nevada	0.5	3.3	6	9.2	13.6	18.3	22	20.8	15.7	10.4	4.6	0.3	10.4		
Salinas, California	10.2	11.3	11.8	13.1	14.6	16.1	16.9	17.4	17.8	16.3	12.8	10.2	14.1		
Salisbury, Maryland	1.3	2.5	7.2	12	17.3	22.1	24.8	24	20.3	14.1	9.2	4	13.2		
Salt Lake City, Utah	-1.7	0.9	5.2	10.1	14.9	20.4	25.2	24.1	18.4	11.6	4.6	-0.3	11.1		
San Diego	14.1	14.7	15.3	16.6	17.8	19.3	21.6	22.5	21.8	19.8	16.6	14.1	17.8		
San Francisco	10.1	11.5	11.7	12.3	13	14	14.7	15.3	15.8	15.2	12.8	10.4	13.1		
San Jose	9.3	10.8	12.1	13.6	15.4	18.1	19.4	19.5	18.5	15.8	12.6	9.9	14.6		
Santa Monica, California	14	14.1	13.8	14.5	15.4	16.8	18.6	19.5	19.3	18.2	16.2	14.2	16.2		
Seattle, Washington	4.2	5.9	7.5	10	13.2	15.8	18	18	15.5	11.6	7.4	5.2	11		
Spokane, Washington	-2.8	0	4.1	8.6	13.1	16.8	20.9	20.2	15.2	9.1	2.5	-1.2	8.9		
South Lake Tahoe, California	7.3	10.4	12	14.6	18.5	22	24.3	23.9	21.9	17.9	11.8	7.4	16		
Stillwater, Oklahoma	2.3	4.6	9.8	15.4	19.9	24.9	27.5	27.2	22.8	16.5	9.4	3.8	15.3		
Tallahassee	11.4	12.8	16.1	19.5	23.5	26.4	27.1	27	25.4	20.5	15.3	12	19.7		
Traverse City, Michigan	-6.3	-6.2	-1.6	5.8	12	17.6	20.6	19.6	15.1	9.4	2.6	-3.4	7		
Tri-Valley, California	8.5	10.8	12.2	14.2	16.8	19.7	21.6	21.5	20.4	17.1	12.1	8.6	15.3		
Urbana, Illinois	-3.2	-1.7	4.3	10.7	16.6	21.9	23.9	22.8	19.1	12.6	5.1	-1	10.9		

Average Yearly Temperatures



- Akron, Ohio
- Anchorage, Alaska
- Anniston, AL
- Athens, GA
- Austin, TX
- Baton Rouge, LA
- Berkeley, California (w)
- Blacksburg, VA
- Boston
- Champaign-Urbana, Illinois
- Chicago, Illinois
- Cleveland, Ohio
- Columbia, Missouri
- Davis, California
- Detroit
- Duluth, Minnesota
- Eau Claire, Wisconsin
- Frederick, Maryland
- Fullerton, California
- Hamden, Connecticut
- Honolulu, Hawaii
- Ithaca, New York
- Kirksville, Missouri
- Las Cruces
- Lafayette, LA
- Los Angeles, California
- Miami, Florida
- Milwaukee, Wisconsin
- Modesto, California
- Naperville, Illinois
- New Haven, Connecticut
- New York
- Oakland, California
- Oklahoma City
- Philadelphia
- Portland, Maine
- Quad Cities, Iowa Illinois
- Reno, Nevada
- Salisbury, Maryland
- San Diego
- San Jose
- Seattle, Washington
- South Lake Tahoe, California
- Tallahassee
- Tri-Valley, California
- Walla Walla, Washington
- Walnut Creek, California
- Albany, New York
- Ann Arbor, Michigan
- Arcata, CA
- Atlanta, GA
- Baltimore, MD
- Bellingham, WA
- Bethlehem, Pennsylvania
- Boise, ID
- Buffalo, New York
- Charlotte, NC
- Cincinnati, Ohio
- Columbia, South Carolina
- Columbus, Ohio
- Denver, Colorado
- Dublin, California
- Durham, NC
- Emeryville, California
- Fresno, California
- Grand Rapids, Michigan
- Harrisburg, Pennsylvania
- Indianapolis
- Kansas City, Missouri
- Knoxville, Tennessee
- Las Vegas
- Laguna Beach, CA
- Madison, Wisconsin
- Memphis, Tennessee
- Minneapolis, Minnesota
- Murfreesboro, Tennessee
- Nashville, Tennessee
- New Orleans
- Norfolk, Virginia
- Oberlin, Ohio
- Petaluma, California
- Pittsburgh
- Portland, Oregon
- Raleigh, North Carolina
- Salinas, California
- Salt Lake City, Utah
- San Francisco
- Santa Monica, California
- Spokane, Washington
- Stillwater, Oklahoma
- Traverse City, Michigan
- Urbana, Illinois
- Whittier, California
- Washington, D.C.



The Average Temperatures of all the Listed Locations of Critical Mass Bike Rides in the USA

As listed on the [website for Critical Mass](#), the cities in the USA where a Critical Mass bike-ride happens. This is not meant to be a complete list, as the nature of Critical Mass is that each event is a self-organised node, not fully connected to any other part of the network.

“Critical Mass is an event [held] in cities around the world where bicyclists (...) take to the streets en masse. While the ride was originally founded with the idea of drawing attention to how unfriendly the city was to bicyclists, the leaderless structure of Critical Mass makes it impossible to assign it any one specific goal. In fact, the purpose of Critical Mass is not formalized beyond the direct action of meeting at a set location and time and traveling as a group through city streets.”

Taken from the [CM Wiki](#)

Gathering the information for these charts was done by using the websites listed below to get an average temperature for the city. In cases where a wide geographical location is given (such as the Tri Cities) or where there are several different rides happening in the same location (such as Los Angeles) I've only used one figure for the average temperature.

There are 94 listed cities that have a Critical Mass ride, but that doesn't mean all of those sites have continual presence all year round. It's hard to believe that Wisconsin and Minnesota - both locations that have bitter winters of around minus ten - have a hard-core cadre of riders ready to come out in that temperature. At the other end of the range is Miami and Honolulu, where temperatures don't dip beneath the low twenties.

Coldest American Critical Mass: Anchorage

2.20° av

Warmest American Critical Mass: Honolulu

25.1° av

